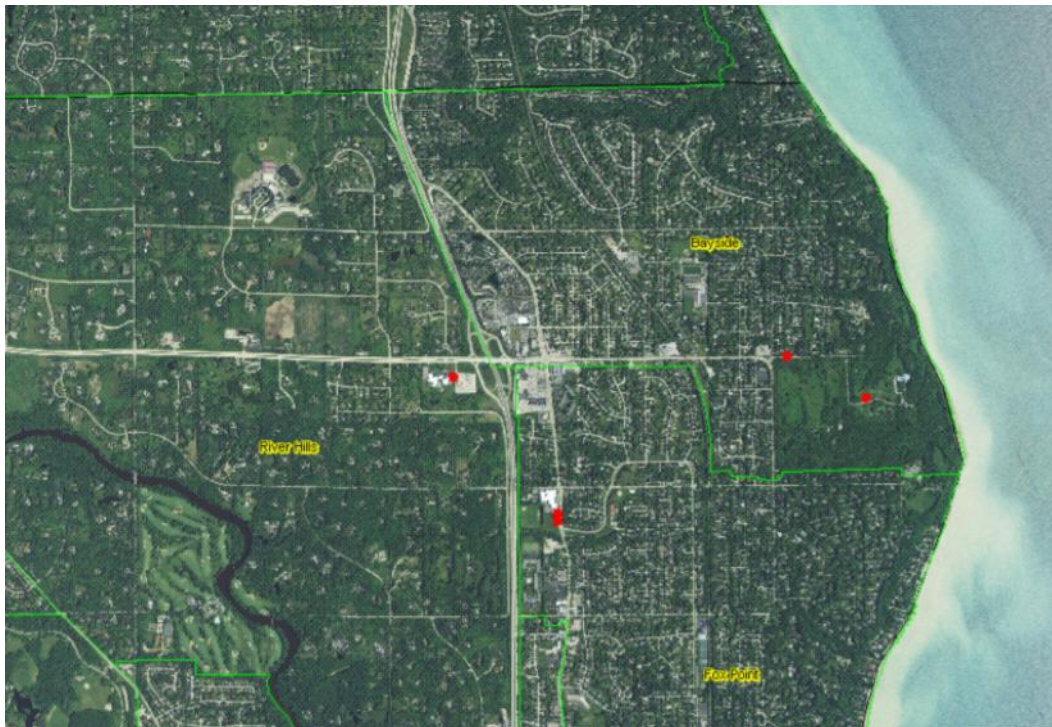


Tuesday Talk

Emerald Ash Borer (EAB) has been the focus of a lot of attention in Bayside the past few years.

- Bayside has been within the quarantined area since 2008.
- EAB was first discovered in Milwaukee County in 2009.
- 15 out of 19 communities in Milwaukee County have confirmed EAB.

In recent days, the Wisconsin Department of Natural Resources (DNR) officially confirmed Emerald Ash Borer in two locations in Bayside. You will see the locations marked in red on the map with two in Bayside and two in neighboring communities.



EAB is an invasive wood-boring beetle that kills Ash trees. Once a tree is infected it very quickly becomes a brittle tree and causes safety concerns.

To prepare for the eventuality of EAB, the Village began implementing an EAB Management Plan in 2010. The DNR has recognized Village efforts and no changes are needed to our program at this time. The program includes:

- Right-of-way tree inventory (species type, condition, recommended action)
- Planting of over 800 new trees since 2007
- Annual public/private private Adopt-A-Tree program with residents
- Annual tree removal, trimming and maintenance program to promote tree health
- Grant funded program for private property Ash Tree removal in 2015
- Ordinance allowing maximum of 5% of any one species to be planted on public lands reducing the likelihood of a singular loss of trees again (Dutch Elm, EAB)

The Village has over 4,000 trees in the right-of-way with around 700 being ash trees. It is estimated that there are over 7,000 privately owned ash trees in the Village. Homeowners are encouraged to evaluate the Ash Trees on their private property and consider ways to combat EAB either through removal or treatment.

[WI DNR information on EAB](#)

[Village information on EAB](#)



Village of Bayside | 9075 N. Regent Road | Bayside | WI | 53217